

Commercial Book

Z20 Series



Overview

COMMERCIAL PIONEER



Pravicy Shutter
Multiple Security
Light
TPM2.0
Modern Standby
IR Camera
Intel & AMD
Kensington Lock
Reliability
TBT4
Rich I/O
SECURED - CORE
Ultra-thin
Dual Size
vPro
Fingerprint
IR Camera
Narrow Bezel
HDMI2.0
Commercial
Business-Class
MIL-STD-810H



Enterprise-class computer designed by IP3 tech

Two Size



14-inch

xN50-140H-YD
A/D metal, C plastic



15.6-inch

xN50-156M-BY
A/C/D metal, C plastic option

Modern Portable

Light to 1.43Kg

A/D metal, C plastic, bron light

Thin to 18.5mm

Fan thermal solution, but modern slim

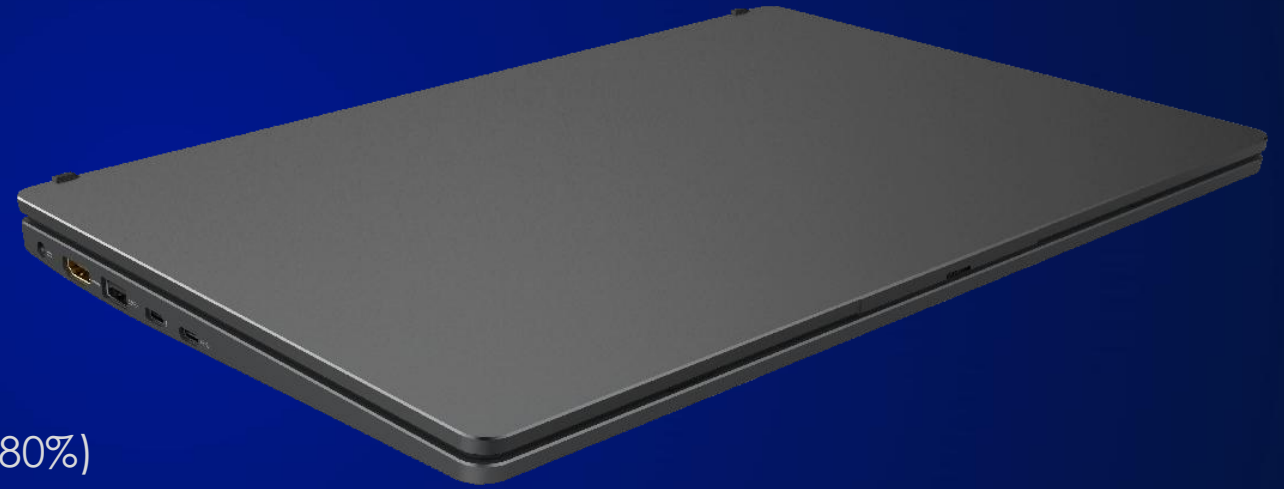
Large to 57Wh

Long battery life (13hrs), with fast charge (1hr 80%)

Stable with MIL-STD-810H

Meets durability standards, to stand up to everyday bumps

*(for 14-inch)



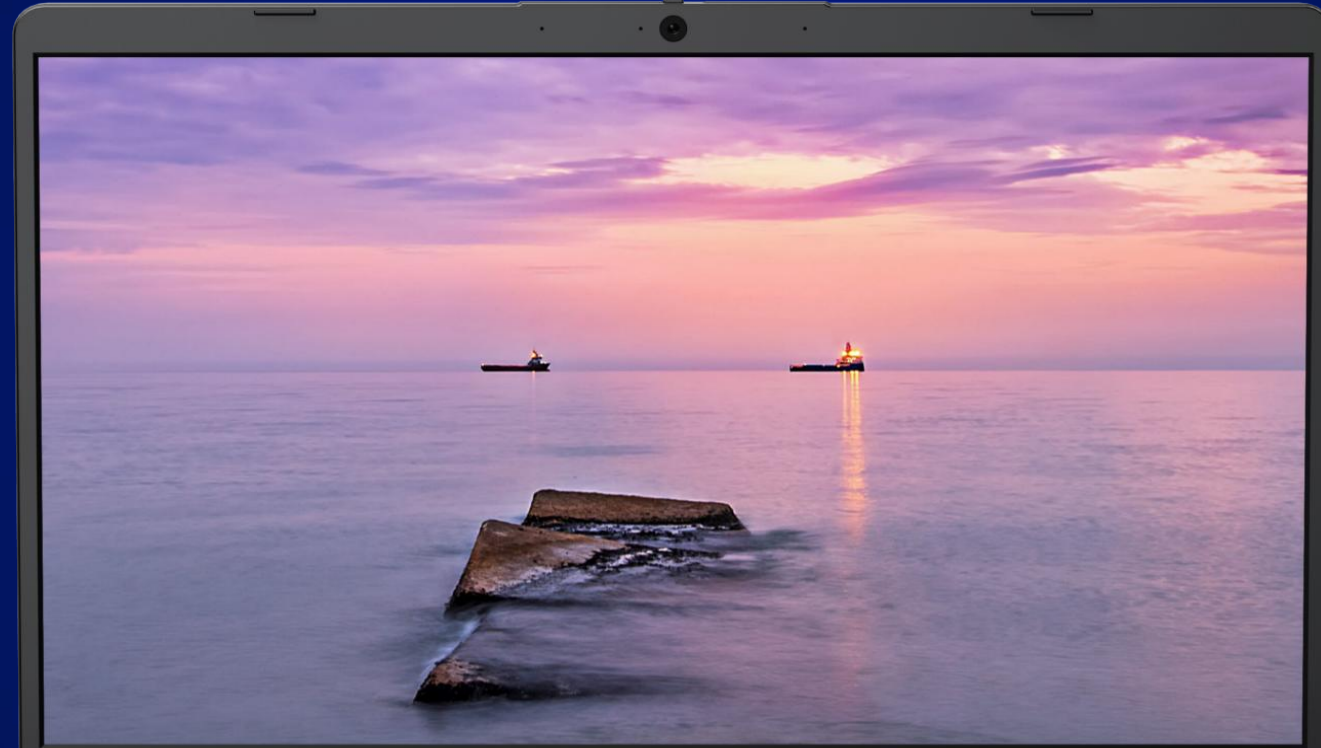
Immersive Vision

16:9

14/15.6-inch, 16:9
Narrow bezel

IPS

178° viewing angle
with anti-glare



4K

Up to 4K
Pure picture

100% sRGB

Outstanding color

Comfortable Typing



Fingerprint
Windows Hello



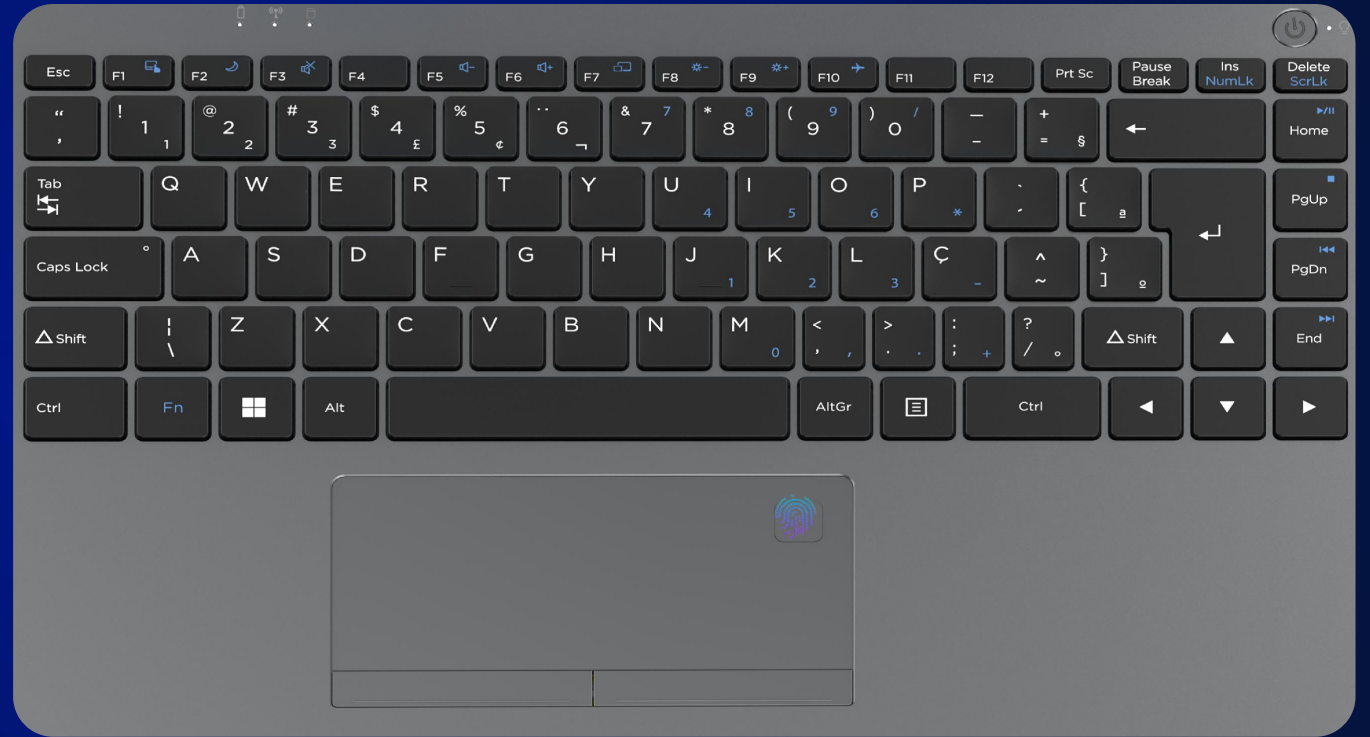
Big keycap
5 millions life cycle



Backlit keyboard
Multi-brightness



5.1" touchpad
Support PTP



14-inch

Rich I/O Ports



14-inch

- Audio
- TF CARD
- USB3.2 Gen1
- RJ45
- K Lock
- DC Jack
- HDMI 2.0
- USB3.2 Gen2
- Type C TBT4 option
- Type C USB3.2 Gen2/DP/PD/Charge



15.6-inch

The left side I/O follow 14-inch

- 6-in-1 SD
- USB3.2 Gen1
- USB2.0
- Audio
- RJ45
- K Lock

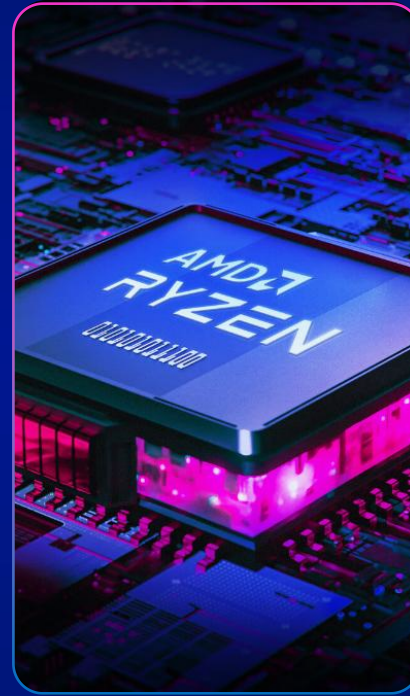
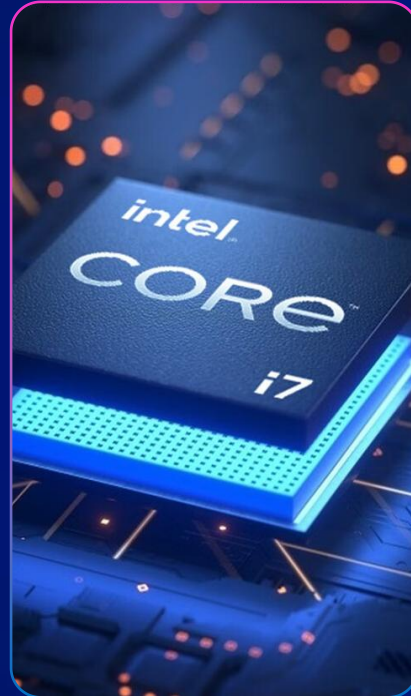
High Configuration



Intel or AMD
Mutil-platform



2*DDR4
SO-DIMM



2*SSD
PCIe x 4



Large Capacity
Long battery life



FAN
28W thermal



Wifi6/ 6E
BT5.2



IR Camera



HD Audio

Super Speed



Thunderbolt 4

Up to 40Gb/s (Video - Two 4K displays, Data - PCIe 32Gb/s)
1*Type-C for TBT4 + 1*Type-C for USB3.2 Gen2/DP/PD/Charge
Ultra-fast & high compatibility



Wifi 6/6E

Up to 40% data rate
+100% maximum number of users
5G/6G wifi frequency



Bluetooth 5.2

Has faster and more powerful transmission
+ LE PowerControl
Increased battery life



GLAN

Up to GLAN
1000Mbps transmission rate
Ultra-fast wired network with RJ45



Business-class Security



Intel vPro

Business-class performance
Hardware-enhanced security
Modern manageability and stability



Microsoft Secured-Core

Ultraslim laptop with high resolution display
Meets Modern Device Security Level 3
High performance & great experiences



BitLocker
TPM2.0



Camera
Shutter



Fingerprint
Power Key



Modern
Standby

Remote Management
UEFI SecureBoot
Modern Device Servicing
Memory Integrity
.....

Specification

Item	Discription	Item	Discription	
LCD	14" or 15.6" 16:9, up to 4K	I/O Ports	1*Ø3.5mm DC Jack	
CPU	Intel RPL-U/P ADL-U/P TGL-UP3, 28W AMD PHX-U RMB+-U RMB-U CZN-U RNR-U LCN-U BCO-U, 28W		Left	1*USB 3.2 Gen2 Type-A
GPU	Integrated Graphics			2*USB Type-C (1*TBT4 + 1*USB3.2 Gen2/DP/PD/Charge)
Memory	2*DDR4 or DDR5 SO-DIMM			1*HDMI 2.0
Storage	2*M.2 2280 SSD (PCIe×4/SATA)		Right	1*Ø3.5mm Audio Combo
Battery	14-inch: 45Wh or 57Wh 15.6-inch: 53.6Wh or 69.3Wh			1*RJ45 GLAN
Camera	1MP/2MP, IR camera option (With privacy shutter)			1*USB3.2 Gen1
WiFi	Support WiFi 802.11ac/ax, Wifi6/6E			1*USB2.0 (15.6" only)
BT	4.2 above			1*SD (15.6") or 1*Micro SD (14")
Speaker	2*8Ω 1W or 2*4Ω 2W, Nahimic support		Adaptor	AC100~240V INPUT, 19V*3.42A 65W OUTPUT
MIC	2*D-MIC on camera module	Material	A/D Metal, B/C Plastic, C Metal option for 15.6"	
Fingerprint	Option, on touchpad or power key	Weight	14": < 1.5Kg; 15.6": < 1.7Kg	
Keyboard	US/ UK	Kensington Lock	Yes	
System	Windows 11	Dimension	14": 324.2*219.7*18.5mm 15.6": 360.56x254.26x18.5mm	



六联智能
SIXUNITED

T H A N K S



No.66, Shiyuan Road, Songjiang District, Shanghai

Shenzhen office: 35F, Block F, Tongfang Information Harbor, No.11, Langshan Road,
Hi-tech Par(North), Nanshan District, Shenzhen